

# The Great Grid Upgrade

nationalgrid

Eastern Green Link 3 (EGL 3) and Eastern Green Link 4 (EGL 4)

## Stage 2 consultation

May 2025

**National Grid Electricity Transmission (NGET) is consulting on updated proposals for Eastern Green Link 3 (EGL 3) and Eastern Green Link 4 (EGL 4) – two offshore high voltage electricity links, with associated primarily underground onshore infrastructure, between Scotland and England.**

EGL 3 and EGL 4 would play important roles in building a more secure and resilient energy system by reliably transporting electricity generated in Scotland, particularly from offshore wind, to the Midlands and South of England.

They are key projects in The Great Grid Upgrade, which will future proof the grid for years to come, facilitating the transition to a clean and affordable energy future.

Last year we consulted the public on our initial proposals in our stage 1 consultation. We are now inviting you to give your feedback on our updated plans.

### Taking part in our consultation

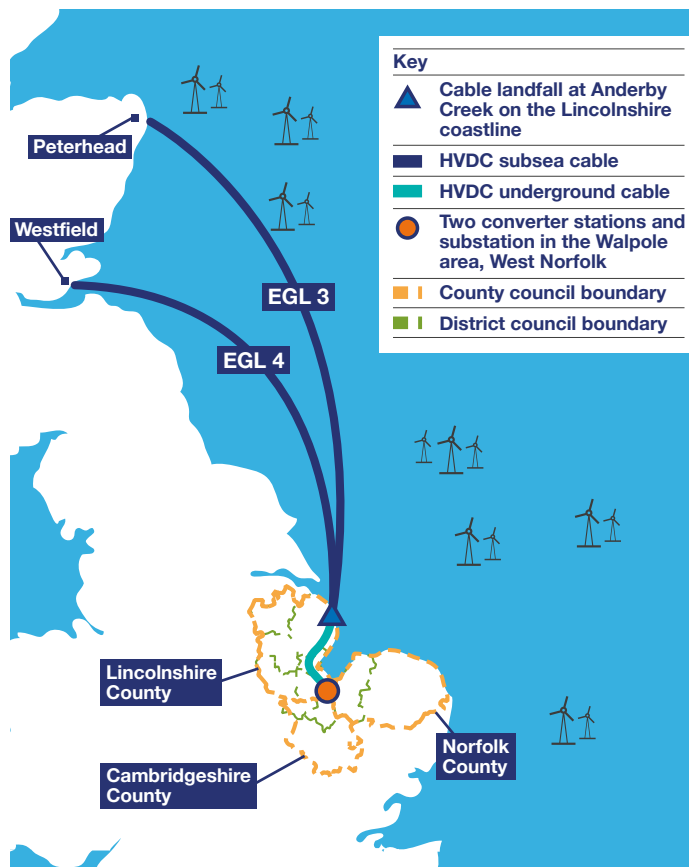
This stage 2 (statutory) consultation will open at **12pm noon Tuesday 13 May** and close at **11:59pm Monday 23 June 2025** and we encourage you to share your views on our further developed proposals.

**This newsletter provides a summary of our proposals, details of how you can get involved in our public consultation and where more information can be found.**

### Our proposals for EGL 3 and EGL 4 in England and English waters, include:

- Underground and subsea cables
- Two converter stations
- One substation

### Overview of EGL 3 and EGL 4



# Our proposals

## EGL 3 and EGL 4 would together transport enough clean energy from Scotland to power up to four million homes in the Midlands and the South of England, playing an important role in building a more secure and resilient future energy system.

We are now seeking your feedback on our detailed proposals for EGL 3 and EGL 4. This includes onshore infrastructure located in the districts of East Lindsey, Boston, South Holland, Fenland, and King's Lynn and West Norfolk, and offshore infrastructure in English waters.

### Our proposals

- **Offshore high voltage direct current (HVDC) cables**
- **Transition joint bays** to connect our offshore and onshore HVDC cables, located onshore near to our proposed cables landfall at Anderby Creek on the Lincolnshire coastline
- **Underground HVDC cables** running together for approximately 100 km from the joint landfall at Anderby Creek to the EGL 3 and EGL 4 converter stations in the Walpole area, West Norfolk
- **Two converter stations** in the Walpole area, with one converter station for EGL 3 and one for EGL 4
- **One substation in the Walpole area, called Walpole B**, where both EGL 3 and EGL 4's Walpole stations would connect to and then onto the electricity transmission network (this substation is also jointly proposed as part of NGET's Grimsby to Walpole project)
- **Underground high voltage alternating current (HVAC) cables** that would connect the converter stations into the substation
- **Supplementary works to the existing 400 kV overhead line** to enable a connection with the new Walpole substation.

Sufficient land would be required in order to build EGL 3 and EGL 4 and to reduce the potential impacts of the projects, including:

- temporary land for construction activities including work areas for construction equipment and machinery, site offices, welfare, storage, access and drainage
- land required for mitigation, compensation and enhancement of the environment as a result of the environmental assessment process, and for the purposes of delivering biodiversity net gain (BNG), for example by landscaping and planting.



National Grid Venture's Viking Link converter station, which illustrates what the EGL 3 and EGL 4 converter stations could look like.

### About National Grid Electricity Transmission

National Grid Electricity Transmission (NGET) is working to build a cleaner, fairer, and more affordable energy system that serves everyone, powering the future of our homes, transport, and industry.

NGET owns, builds, and maintains the electricity transmission network in England and Wales. It is NGET that is developing proposals for the EGL 3 and EGL 4 projects in England and English waters.



# Our consultation

## Our proposals for stage 2 consultation

For our stage 2 consultation we are consulting on our defined, detailed proposals, including the location of our proposed infrastructure within draft order limits (land boundaries).

The draft order limits outline the area, both onshore and offshore, within which new infrastructure and temporary construction works would be located.

It also includes areas where temporary and permanent works to the highways would be needed to facilitate the

construction of the project. This means there are areas within the draft order limits which are located away from the main project area.

We welcome your feedback on all aspects of our proposals.

**High level maps of the location of our proposed onshore and offshore infrastructure are shown on the opposite side of this newsletter.**

---

## The development consent order process

EGL 3 and EGL 4 are projects of national significance. These types of projects require a special type of planning permission in order to be built, known as a development consent order (DCO).

Consultation is an important part of the DCO process. Feedback from our consultations – along with the outcome of technical assessments and environmental surveys – helps us to develop our proposals before we submit our DCO application to the Planning Inspectorate.

The Planning Inspectorate will examine our application and will then make a recommendation to the Secretary of State for Energy Security and Net Zero who will decide whether to grant consent for the building and operation of EGL 3 and EGL 4.

This is our second public consultation on our proposals for EGL 3 and EGL 4.

### Statement of Community Consultation (SoCC)

The SoCC is a document which explains how we will consult the community, including information for members of the public on how to get involved and submit feedback. We have worked with local authorities in the areas affected by the projects to develop and agree the SoCC. The SoCC is available on our project website and at local information points (more information on this later in the newsletter).





# How to find out more

**The stage 2 consultation for EGL 3 and EGL 4 will open at 12pm noon Tuesday 13 May and close at 11:59pm Monday 23 June 2025. It is open to anyone with an interest in our proposals.**

**You can take part in the consultation by:**

- **attending a public information event** – come along to one of our face-to-face public exhibitions
- **joining a webinar** – by registering on our project website or contacting us for more information
- **booking a 'team call-back'** – have your questions answered via phone. You can request an appointment by contacting us
- **requesting or picking up printed materials** – printed materials are also available on request (some technical documents may be subject to a printing charge)
- **visiting our website** – all the latest information and consultation materials can be found on our website [nationalgrid.com/egl3andegl4](https://nationalgrid.com/egl3andegl4)
- **getting in touch** – you can contact us by email at [contactegl3and4@nationalgrid.com](mailto:contactegl3and4@nationalgrid.com) or by telephone on **0800 298 0405**. Phonelines are open **Monday to Friday 9am–5pm**, with an answerphone facility taking messages outside of these hours.

**More detailed information on the project is available in the Stage 2 consultation document, which can be found on the project website and in hard copy at the public information events, local information points or on request.**

More technical information explaining the potential effects of our proposals on the environment, along with the measures we would take to mitigate against any impacts, can be found in the Preliminary environmental information report (PEIR).

All documents can be found on the project website.

**The deadline for providing feedback is 11:59pm on Monday 23 June 2025.**

## How to respond

Your feedback is important in helping us to develop and refine our plans. You can provide your feedback in the following ways.

### Complete a feedback form

You can access and complete an online feedback form on our project website.

Paper copies are available to pick up from the local information points listed in this newsletter and will be available at our public information events.

You can also download and print a copy of the feedback form from our website and return it to us for free, by post. Alternatively, please get in touch and we will post one to you.

## Email us

If you prefer to send us your comments via email, you can send them to us at [contactegl3and4@nationalgrid.com](mailto:contactegl3and4@nationalgrid.com)

### Send us a letter

You can send a letter or completed feedback form to **Freepost EASTERN GREEN LINKS 3 & 4** (no stamp or further address details are required).

### Other information

If you would prefer to receive any information relating to the consultation through the post, or you need it in another format, please get in touch.

# Public information events

We are holding in-person public information events, which will include information about our proposals and copies of maps and technical documents. Members of the project team will be available to explain our proposals and answer your questions. There is no need to register; you only need to turn up on the day.

## EGL 3 and EGL 4 are separate to NGET's Eastern Green Link 5 (EGL 5) project.

The first stage of consultation on early proposals for this project, which would be located in East Lindsey, will open at 12pm noon Tuesday 13 May and close at 11:59pm Monday 23 June 2025. See the project website [nationalgrid.com/egl5](https://nationalgrid.com/egl5) for more information.



## Public information events

Location	Date	Time	Address
Burgh le Marsh	Wednesday 21 May 2025	2pm – 7pm	Burgh le Marsh Village Hall, Jacksons Ln, Burgh le Marsh, PE24 5LA
Huttoft*	Thursday 22 May 2025	2pm – 7pm	Huttoft Village Hall, Sutton Rd, Alford, LN13 9RG
Eastville	Saturday 24 May 2025	2pm – 7pm	Eastville, Midville and New Leake Village Hall, Station Road, Eastville, PE22 8LS
Walpole	Thursday 29 May 2025	2pm – 7pm	Walpole Community Centre, Summer Close, Walpole St Andrew, PE14 7JW
Alford*	Saturday 31 May 2025	2pm – 7pm	Alford Corn Exchange, 9 Market Place, Alford, LN13 9EB
Kirton Holme	Tuesday 3 June 2025	2pm – 7pm	Poachers Country Hotel, Swineshead Road, Kirton Holme, PE20 1SQ
Holbeach	Wednesday 4 June 2025	2pm – 7pm	The Holbeach Hub, Boston Road South, Holbeach, PE12 7LR
Tydd St Giles	Thursday 5 June 2025	2pm – 7pm	Tydd St Giles Community Centre, Broad Drove East, Wisbech, PE13 5LN

\* Joint in-person consultation events with EGL 5.



# Webinars and 'team call-backs'

At our online webinar sessions we will present details of our proposals followed by an open question and answer session.

Our webinars are location themed. You can find the most relevant section to you by looking at the onshore overview map on the back of this newsletter or viewing the interactive map on our website.

Our Stage 2 consultation document also has a high-level summary of these sections. Detailed plans are available on our website.

Details on how to sign up for a webinar are available on the website or by contacting us by phone on **0800 298 0405** or by email at **[contactegl3and4@nationalgrid.com](mailto:contactegl3and4@nationalgrid.com)**.

Webinar	Sections	Date	Time
Webinar 1: Offshore proposals*	Offshore proposals	Friday 23 May 2025	12pm – 1pm
Webinar 2: Anderby Creek landfall to Candlesby*	Section 1	Thursday 5 June 2025	7pm – 8pm
Webinar 3: Candlesby to Frith Bank	Sections 2 and 3	Tuesday 10 June 2025	7pm – 8pm
Webinar 4: Frith Bank to South Holland Drain	Sections 4, 5 and 6	Friday 30 May 2025	12pm – 1pm
Webinar 5: South Holland Drain to Walpole area	Section 7	Thursday 12 June 2025	12pm – 1pm

\* Joint webinars with EGL 5.

## 'Team call-backs'

You can book an individual telephone appointment with the team by telephoning, emailing or writing to us.

To help us set up the session and find the right project team member(s), please tell us your preferred availability and question/topic of interest.

'Team call-backs' will be running for the duration of the consultation period.

# Local information points

Paper copies of the Consultation newsletter, Feedback form and Stage 2 consultation document are available to collect from the locations listed below. Reference only copies of the Statement of Community Consultation (SoCC) and Non-technical summary of the Preliminary environmental information report (PEIR) are also available to view at these locations.

Local information point opening hours can be subject to change. Please check with the relevant venue for the most up to date opening hours.

Documents are also available to download from our website.



## Local information points

Alford Library and Focal Point*	6 South Market Place, Alford, LN13 9AF
Burgh le Marsh Library and Community Hub	Tinkers Green, Jacksons Lane, Burgh le Marsh, PE24 5LA
Skegness Library*	23 Roman Bank, Skegness, PE25 2SA
Boston Library	County Hall (Bank Street Entrance), Bank Street, Boston, PE21 6DY
Holbeach Community Library	5 Fleet Street, Holbeach, PE12 7AD
Long Sutton Library	Trafalgar Square, Long Sutton, PE12 9HB
Wisbech Library	Ely Place, Wisbech, PE13 1EU
King's Lynn Library	London Road, King's Lynn, PE30 5EZ

\* Joint local information points with EGL 5.

# Next steps

## The feedback we receive at stage 2 consultation will help us to further develop our proposals for EGL 3 and EGL 4.

All feedback we receive as part of this consultation will be carefully considered, alongside the outputs of our ongoing technical and environmental assessments, as we finalise our proposals and prepare our application for development consent. An indicative project timeline can be found below.

As part of our submission to the Planning Inspectorate, we will include a consultation report, detailing how we have taken account of feedback received from both stages of consultation.



### Contact our lands team

In the DCO process, anyone with a legal interest in land is known as a Person with an Interest in Land (PIL). If you are identified as a PIL, we will contact you directly.

More detailed information for landowners, along with relevant contact information, can be found on the landowner page of our project website.

If you are a landowner and believe your property may be affected by our proposals, and want to talk to our lands team, please email [egl3and4@ardent-management.com](mailto:egl3and4@ardent-management.com) or call **0203 302 0545** or write to: **EGL 3 and EGL 4, Ardent, 36 Park Row, Leeds, LS1 5JL**

## Contact us



### Visit our website:

[nationalgrid.com/egl3andegl4](https://nationalgrid.com/egl3andegl4)

### Email us:

[contactegl3and4@nationalgrid.com](mailto:contactegl3and4@nationalgrid.com)

### Call us on our freephone line:

0800 298 0405 (Mon-Fri, 9am-5pm)

### Write to us:

Freeport EASTERN GREEN LINKS 3 & 4



# Overview maps of EGL 3 and EGL 4

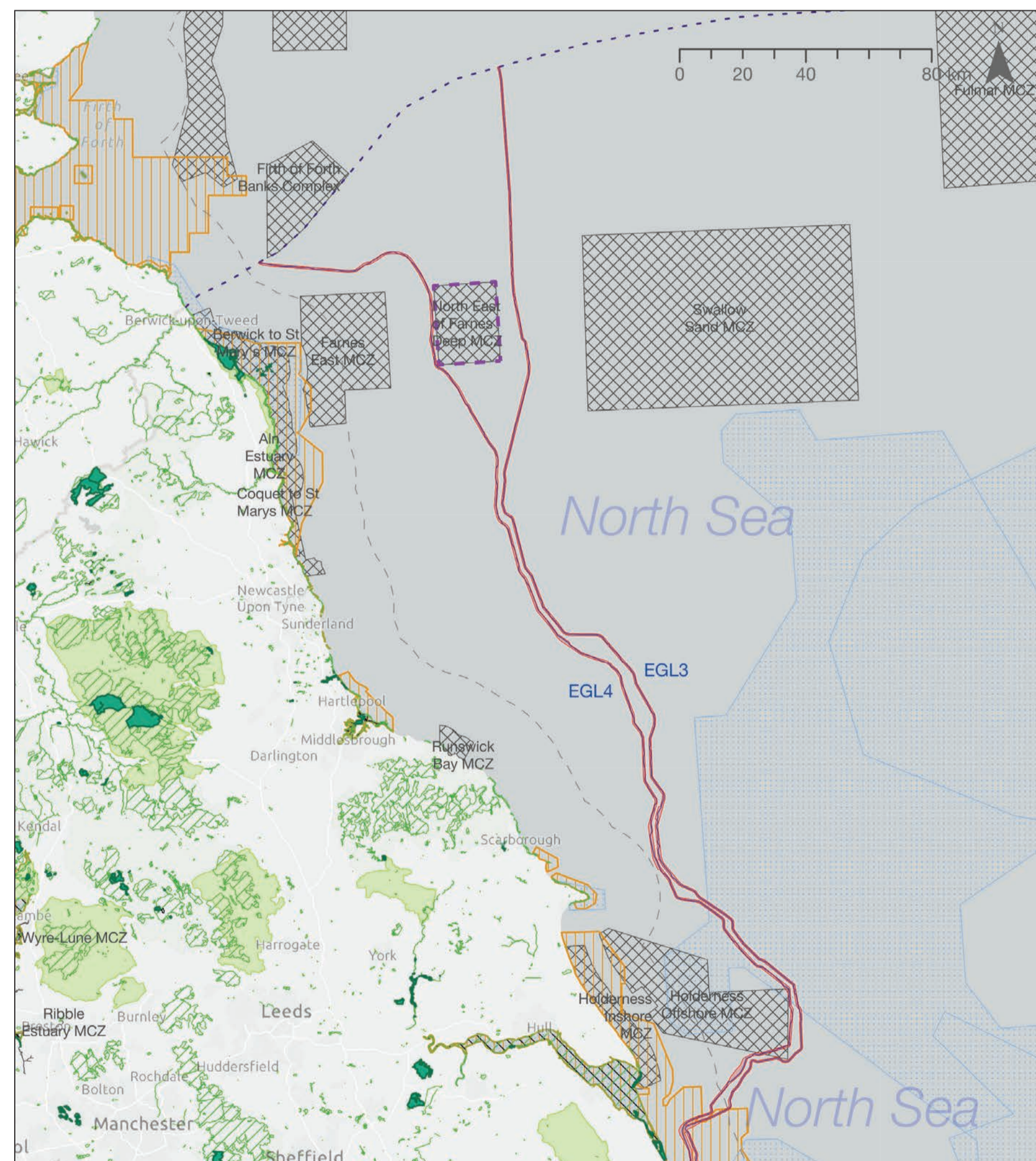
These maps provide an overview of the EGL 3 and EGL 4 onshore proposals in England and offshore proposals in English waters.

Both maps show draft order limits, which outline the area within which new infrastructure and temporary construction works would be located.

Please see our website or attend an in-person public information event to view our detailed onshore and offshore maps, including an interactive map. Our Stage 2 consultation document, available online and at the local information points and public information events listed in this newsletter, also contains detailed sections of the onshore overview map.

## Overview of EGL 3 and EGL 4 offshore in English waters

- Legend**
- EGL 3 and EGL 4 offshore cable route
  - Highly Protected Marine Areas
  - National Landscape
  - Special Protection Areas with Marine Components
  - Marine conservation zones
  - National Nature Reserves
  - Ramsar
  - Scottish Adjacent Waters
  - EGL 3 and EGL 4 marine cable draft order limits
  - Sites of Special Scientific Interest
  - Special Areas of Conservation with Marine Components
  - Territorial Sea Limit (12nm)



### Overview of EGL 3 and EGL 4 onshore in England

This map shows the draft order limits of the projects in Lincolnshire, Cambridgeshire and Norfolk.

Draft order limits outline the area within which the projects' infrastructure, including underground cables, converter stations and substation, would be located, as well as the works to facilitate their construction.

We have divided the draft order limits for our onshore proposals into the following sections to make it easier to review, attend webinars, and provide feedback:

- Section 1** – Anderby Creek landfall to Candlesby
- Section 2** – Candlesby to Midville
- Section 3** – Midville to Frith Bank
- Section 4** – Frith Bank to Sutterton
- Section 5** – Sutterton to Moulton Seas End
- Section 6** – Moulton Seas End to South Holland Drain
- Section 7** – South Holland Drain to Walpole area

There are instances where the draft order limits appear on sections of road, sometimes located far away from the main draft order limits. These are to facilitate access for construction activities and represent temporary works to the highway.

#### Underground cable, transition joint bays, converter stations and substation

As part of our design process, we have selected one site for our proposed Walpole B substation and we have four possible options – Options A, B, C and D – for the siting of our two proposed converter stations. The map shows all four options for the converter stations combined.

We are seeking feedback on these options as part of the stage 2 consultation. We will consider this feedback along with the wider environmental and engineering constraints, before deciding on a preferred option for inclusion in our DCO application.

For more detailed maps and information on each section, see our Stage 2 consultation document.

Our underground cables and transition joint bays are contained within the draft order limits shown in the map. See detailed maps for their locations.

### Overview of EGL 3 and EGL 4 offshore in English waters

This map shows a high level view of the offshore draft order limits and offshore cable routes for EGL 3 and EGL 4, as well as designated sites.

The proposed offshore routes have been carefully designed to avoid ecologically important areas and minimise interactions with designated sites as much as possible. This has been balanced with finding routes that are technically feasible, as well as considering infrastructure and activities for other industries and sectors.

The subsea cables and associated infrastructure would be installed within the draft order limits, with the exact alignment of the cables informed by further offshore surveys and consultation feedback. Our routes have been developed through consultation with offshore stakeholders and technical and ecological surveys.

You can view a more detailed map of our offshore proposals on our website and at public information events.

## Overview of EGL 3 and EGL 4 onshore in England

### Legend

- Walpole B substation
- Converter station options A-D combined
- Draft order limits (underground cables within)
- Existing 132kV overhead line
- Existing 400kV overhead line

